



# Austmine STEM METS Career Pathway Program Student Information Session



**STEM**  
METS CAREER  
PATHWAY PROGRAM



# Austmine STEM METS Career Pathway Program

The program is designed to provide students on-the-job experience, mentoring and soft skills training for a successful STEM career in the METS sector, through a ten-week paid internship at an Austmine member company.

## What does the program include?

- Online coaching, honorary Austmine membership and ongoing support through their internship.
- A series of webinars featuring industry speakers to provide coaching for the successful students on starting a career in the METS sector.
- A 10-week paid internship at a participating METS company, during the summer period of 2020-2021
- Access to our dedicated STEM METS Careers LinkedIn group, to connect those wishing to network with our sector.

"Overall, Austmine STEM Program is a well-organised program for helping students gain more real-world experiences. I am absolutely grateful for having this opportunity to participate in the Austmine STEM program and work for Intov8"

*Demi Li, Intern, Intov8*





# Who is Austmine?



Connect

Innovate

Promote

Collaborate



Austmine is the leading industry body for the Australian Mining Equipment, Technology and Services (METS) sector, with over **600 corporate members** around the country.

**CHAMPIONING THE AUSTRALIAN  
METS SECTOR TO CONTINUE TO BE  
THE BEST IN THE WORLD**

# Mining & METS

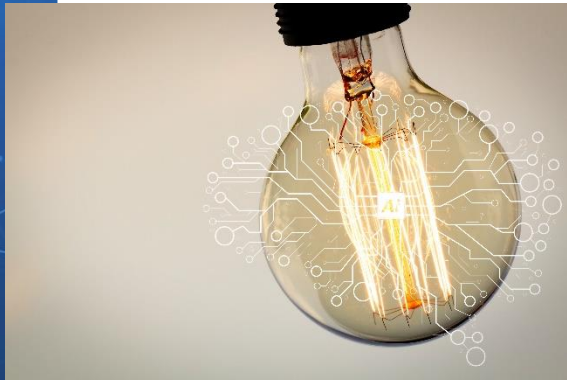
The Mining Equipment, Technology and Services (METS) sector employs more than **350,000 people** across Australia.

METS range from major multi-nationals, to innovative SMEs, and exciting technology start-ups. They work with the full mining value chain, from greenfields exploration, through to production, processing and export.





# Why Participate?



Gain advice and support from a leading industry association on interviews, networking, managing up and more through our online training events

Receive the work experience required to finish many STEM degrees, and be paid whilst doing it

Get a foot in the door at globally recognised companies with offices around the world

Have your first taste of a sector that is innovative, exciting, technologically advanced and offers fantastic career opportunities



# How to Apply

Once positions become available, they will be posted on your university job portal as well as the Hot Rubble - Connect job portal.

Before you can apply for a position, you will need to create a job seeker profile – this will make it easier when applying for multiple roles.

When applying for multiple roles, you must write a separate cover letter for each.

## KEY DATES

**May 2020** – Program opens for companies to sign up

**July 2020** – Internship placements are advertised and open for applications from students

**August 2020** – Students are shortlisted

**September 2020** – Interviews with prospective employer companies occur

**October 2020** – Successful students are notified

**November 2020** – Internships commence

# 2020 Participating Companies & Positions



## Intov8

### Position(s):

- Software Development
- Chemistry, Biochemistry or Biochemical Engineer

**Location:** Brisbane QLD, Australia

## Bluefield AMS Pty Ltd

### Position(s):

- Electrical Engineer
- Mechanical Engineer

**Location:** Brisbane QLD, Australia

## Optimize Group Australia

### Position(s):

- Mechanical, Process, Chemical or Piping Engineer

**Location:** Brisbane QLD, Australia

## CRC ORE

### Position(s):

- Engineering, Mining or Mechanical Engineer
- Mathematics
- Geology or Mineralogy
- Computer Science / Information Technology

**Location:** Pullenvale QLD, Australia

## Mining Plus Pty Ltd

### Position(s):

- Mining Engineer

**Location:** Perth WA, Australia

## IMDEX

### Position(s):

- Mechatronics or Electronics Engineering
- Mechanical Engineering
- Mechanical, Mechatronics or Electronics Engineering

**Location:** Perth WA, Australia

## Geological Survey of NSW

### Position(s):

- Geoscience
- Earth Science
- Computer Science, Mathematics, Data Science,

**Location:** Maitland NSW, Australia

## RCR Mining Technologies Pty Ltd

### Position(s):

- Mechanical Engineer

**Location:** Bunbury WA, Australia

## Metallurgical Systems

### Position(s):

- Process Engineer

**Location:** Sydney NSW, Australia



# Don't Forget!

To be eligible for the program, you must meet the below criteria;

- Studying a STEM degree
- Currently undertaking study in your second, third, fourth or masters' degree.
- You must be available for a minimum period of 10 weeks during the 2020/21 summer period
- International students are eligible, granted they have a working in Australia Visa
- Students who graduated last year are not eligible
- If you wish to apply for an internship in another state, travel and accommodation costs must be covered by you.



**STEM**  
METS CAREER  
PATHWAY PROGRAM



Nicole Colomb, Program Coordinator  
[nicole.colomb@austmine.com.au](mailto:nicole.colomb@austmine.com.au)



# Resources



**Online Content includes:**

[STEM METS Career Pathway Program Information Brochure](#)

[FAQs for Students](#)

[2019 Program Highlights, Austmine](#)

[2019 Student Interviews](#)

**Visit our website**

<http://www.austmine.com.au/Programs/austmine-stem-mets-career-pathway-program-2>

<https://www.hotrubble.com.au/austmine-stem-mets-program>

**Joined us on LinkedIn | Austmine STEM METS Career Pathway Program**

<https://www.linkedin.com/groups/13542297>

